

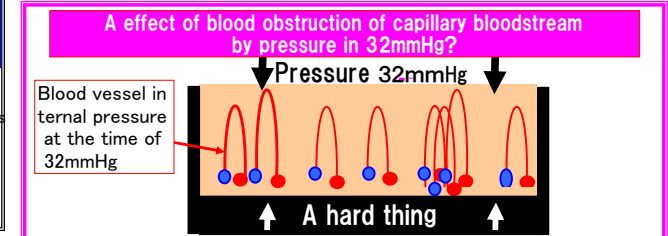
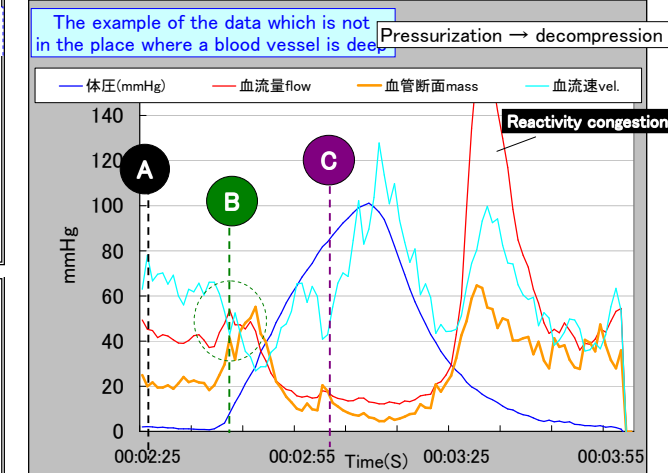
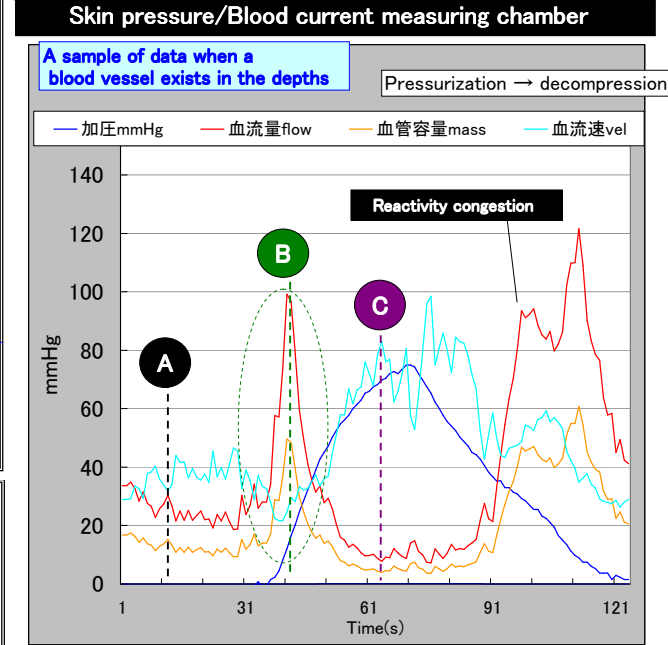
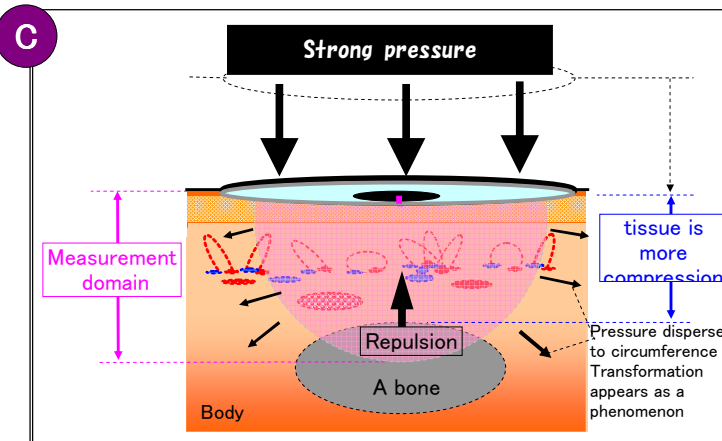
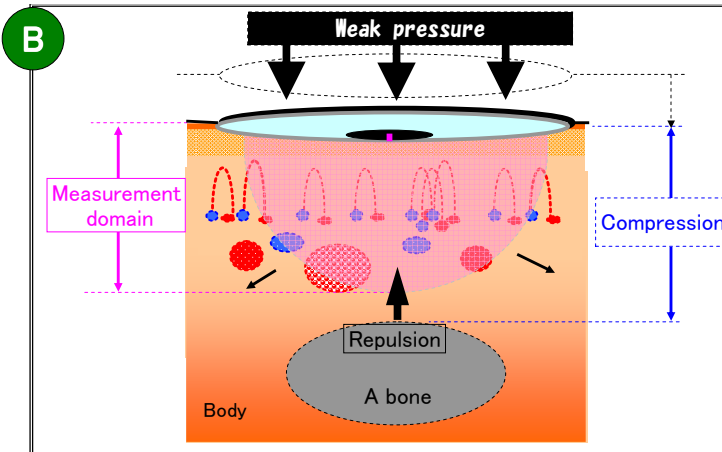
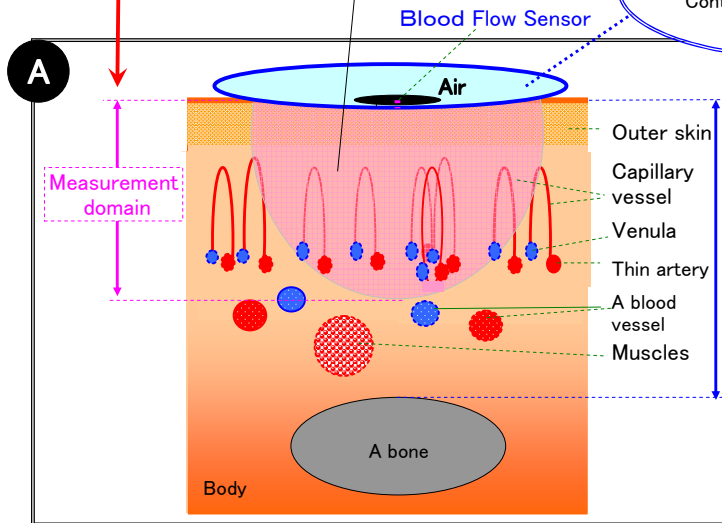
③ The relation between the bloodstream measurement and compression of a subcutaneous tissue by skin pressure <please see an image figure.>

<A part of the depths of skin and blood vessel by body pressure responsibility for a blood vessel is ease by a soft blood vessel organization>
 *When it pressurized skin by pressure slowly, it is confirmed the phenomenon that bloodstream (flow / mass) suddenly goes up temporarily

A measurement by the Doppler change of laser light. Laser light enters to about the same distance of an organization

It is scattered in skin, and laser light becomes it in the shape of a hemisphere. It expresses it in MASS for capacity of a blood vessel

Skin pressure/Blood current measuring chamber
 Contact surface pressure/
 Blood flow sensor



< As a data analysis >

In a traditional ways of thinking, it was thought that bloodstream flow increased in vasodilation mass by thermal insulation and warming when fiber covered skin.; If it covers, how much does it change to pressure influence?

- ①When a blood vessel is being crushed by pressure etc., blood flow velocity vel. goes up and the blood flow volume flow and blood vessel volume mass fall.
- ②In the state of the pressure which is the grade which has also gone up blood flow velocity vel., by compression of a blood vessel organization, in a depths blood vessel domain mass does not fall by measurement and the blood flow volume flow may not fall.
- ③A method to watch obstruction influence of bloodstream. It is quantity of re-return current just after liberation from pressure
- ④As a warm, mass goes up by warmth retaining property by blood vessel extension and skin temperature goes up and perspiration also increases.